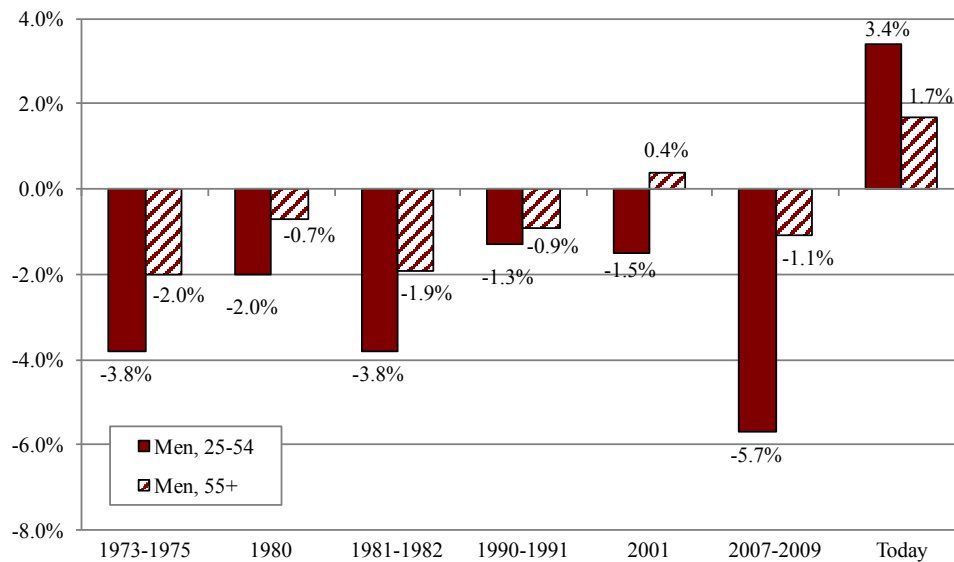

FREQUENTLY REQUESTED DATA

CENTER for
RETIREMENT
RESEARCH
at BOSTON COLLEGE

APRIL 2016

CHANGE IN EMPLOYMENT TO POPULATION RATIO, MEN AGED 25-54 AND 55 AND OLDER, RECENT RECESSIONS AND TODAY



NOTE: Data are seasonally adjusted. "Today" covers the period from August 2009-April 2016.
SOURCES: U.S. Bureau of Labor Statistics, 2015, *Labor Force Statistics from the Current Population Survey*;
National Bureau of Economic Research, 2015, *U.S. Business Cycle Expansions and Contractions*.

For additional data, visit:
crr.bc.edu/data/
