

---

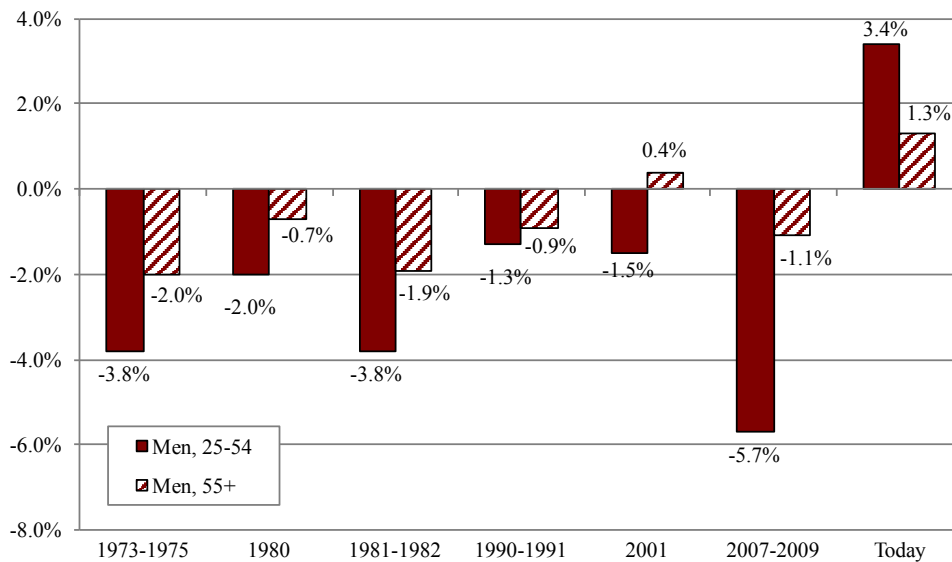
# FREQUENTLY REQUESTED DATA

CENTER for  
RETIREMENT  
RESEARCH  
at BOSTON COLLEGE

MAY 2016

---

## CHANGE IN EMPLOYMENT TO POPULATION RATIO, MEN AGED 25-54 AND 55 AND OLDER, RECENT RECESSIONS AND TODAY



NOTE: Data are seasonally adjusted. "Today" covers the period from August 2009-May 2016.

SOURCES: U.S. Bureau of Labor Statistics, 2015, *Labor Force Statistics from the Current Population Survey*; National Bureau of Economic Research, 2015, *U.S. Business Cycle Expansions and Contractions*.

For additional data, visit:  
[crr.bc.edu/data/](http://crr.bc.edu/data/)

---