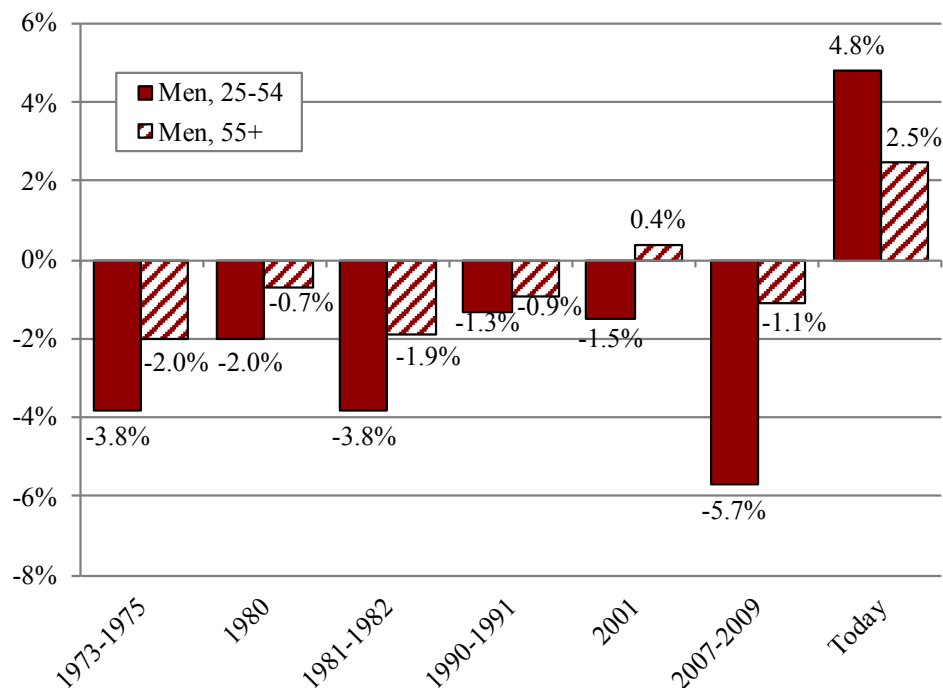


# FREQUENTLY REQUESTED DATA

SEPTEMBER 2019

## CHANGE IN EMPLOYMENT TO POPULATION RATIO, MEN AGED 25-54 AND 55 AND OLDER, RECENT RECESSIONS AND TODAY



NOTES: Data are seasonally adjusted. "Today" covers the period from August 2009-August 2019.  
SOURCES: U.S. Bureau of Labor Statistics, 2019, *Labor Force Statistics from the Current Population Survey*;  
National Bureau of Economic Research, 2019, *U.S. Business Cycle Expansions and Contractions*.

For additional data, visit:  
[crr.bc.edu/data/](http://crr.bc.edu/data/)