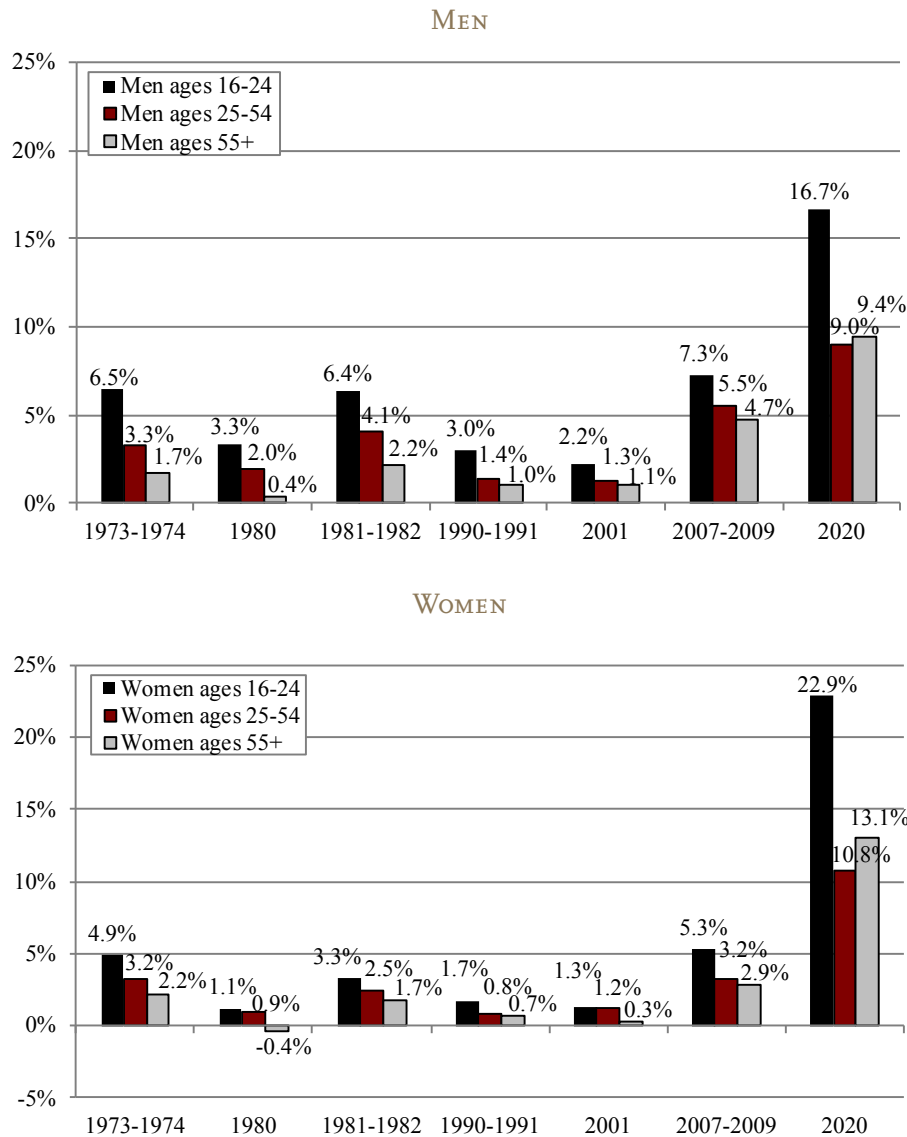


CHANGE IN UNEMPLOYMENT RATE (FROM PEAK TO TROUGH) IN RECENT RECESSIONS AND 2020, BY GENDER AND AGE

CENTER for
RETIREMENT
RESEARCH
at BOSTON COLLEGE



* For the 2020 recession, the trough, as measured by the unemployment rate, was observed in April. Therefore, the change in unemployment represents the difference between February and April.
Source: U.S. Bureau of Labor Statistics. 2020. *Selected Unemployment Indicators, Seasonally Adjusted*. Economic News Release. Washington, DC.

For more information on the COVID-19 crisis, visit:
<https://crr.bc.edu/newsroom/crr-on-covid-19/>